



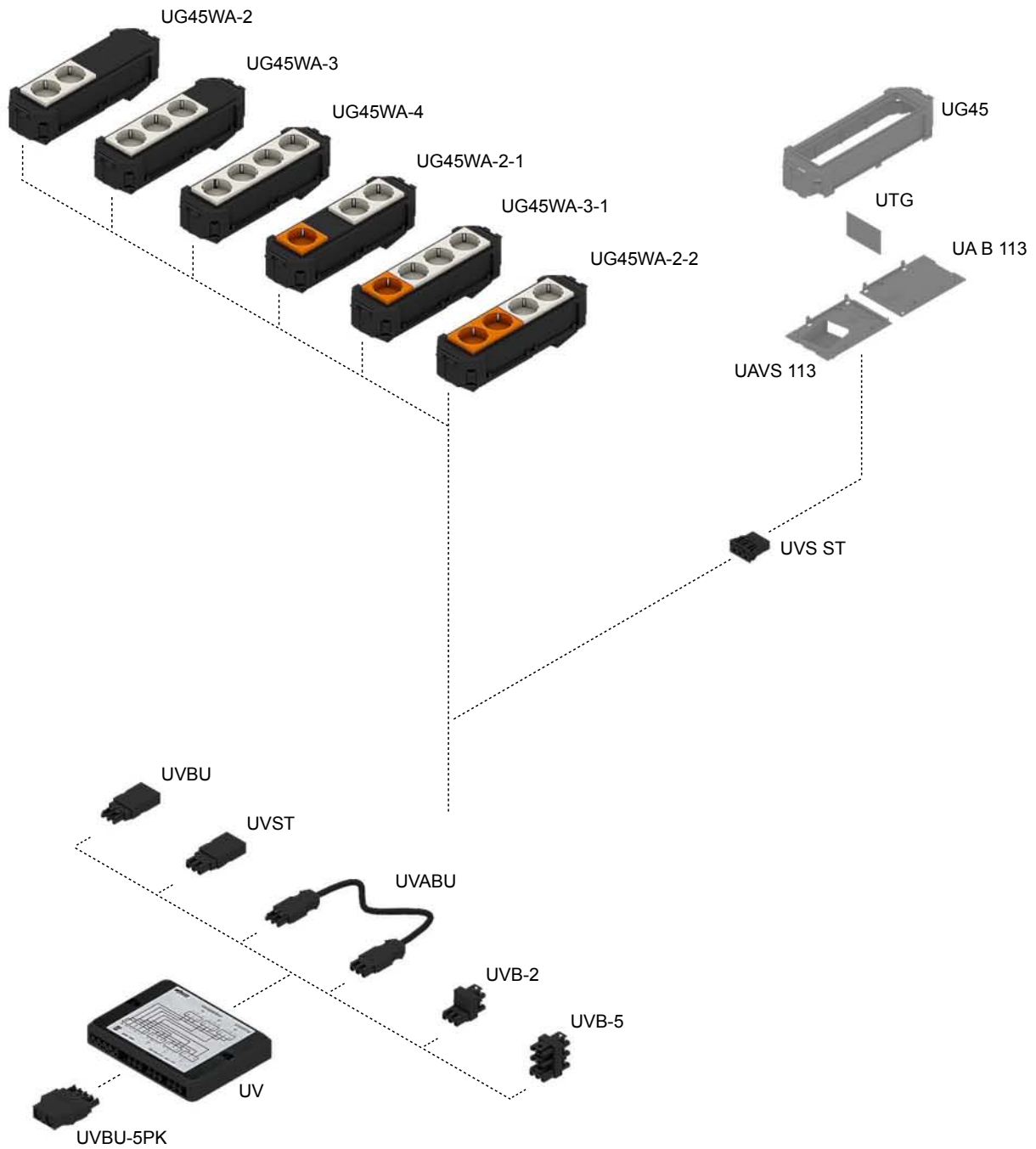
Connector systems

Pre-converted device cups



System overview

Device installation cups and installation devices WAGO



Device installation cups and installation devices

Connector system WAGO

UG45WA-2 device mounting cup, WAGO

Only suitable for raised and hollow floors. Other pre-converted device cups are available upon request. For assembly instructions, see the chapter assembly.

article number	colour Snap-in	configuration grounding receptacle 16A
ABS		
UG45WA-CW2	black	double, cream white
UG45WA-G2	white	double green
UG45WA-O2	white	double, orange



UG45WA-3 device mounting cup, WAGO

Only suitable for raised and hollow floors. Other pre-converted device cups are available upon request. For assembly instructions, see the chapter assembly.

article number	colour Snap-in	configuration grounding receptacle 16A
ABS		
UG45WA-CW3	black	triple, cream white
UG45WA-G3	white	Three-fold green
UG45WA-O3	white	triple, orange



UG45WA-4 device mounting cup, WAGO

Only suitable for raised and hollow floors. Other pre-converted device cups are available upon request. For assembly instructions, see the chapter assembly.

article number	colour Snap-in	configuration grounding receptacle 16A
ABS		
UG45WA-CW4	black	quadruple, cream white
UG45WA-O4	white	quadruple, orange



UG45WA-2-1 device mounting cup, WAGO

Only suitable for raised and hollow floors. Other pre-converted device cups are available upon request. For assembly instructions, see the chapter assembly.

article number	colour Snap-in	configuration grounding receptacle 16A
ABS		
UG45WA-CW2O1	back/white	double cream white + single orange
UG45WA-O2CW1	white/black	double orange + single cream white



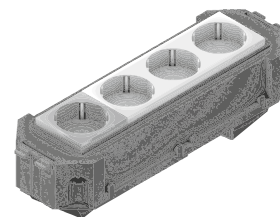
Device installation cups and installation devices

Connector system WAGO

UG45WA-3-1 device mounting cup, WAGO

Only suitable for raised and hollow floors. Other pre-converted device cups are available upon request.
For assembly instructions, see the chapter assembly.

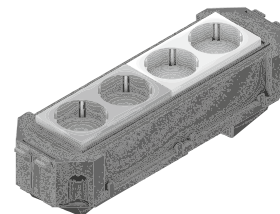
article number	colour Snap-in	configuration grounding receptacle 16A
ABS		
UG45WA-CW3O1	back/white	triple cream white + single orange
UG45WA-O3CW1	white/black	triple orange + single cream white



UG45WA-2-2 device mounting cup, WAGO

Only suitable for raised and hollow floors. Other pre-converted device cups are available upon request.
For assembly instructions, see the chapter assembly.

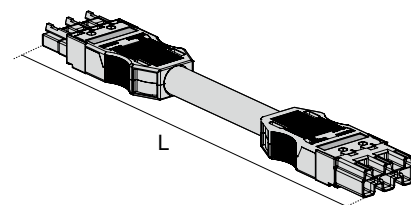
article number	colour Snap-in	configuration grounding receptacle 16A
ABS		
UG45WA-CW2O2	back/white	double cream white + double orange
UG45WA-CW2G2	back/white	double creme white + double green



UVABU connecting line plug - socket, WAGO

WAGO WINSTA MIDI system
For assembly instructions, see the chapter assembly.

article number	L mm	KQ mm ²	colour	input/output
PA PVC				
UVABU-S-2.5-100	1000	2,5	black	3pole
UVABU-S-2.5-400	4000	2,5	black	3pole
UVABU-S-2.5-600	6000	2,5	black	3pole
UVABU-S-2.5-800	8000	2,5	black	3pole
UVABU-W-2.5-100	1000	2,5	white	3pole
UVABU-W-2.5-400	4000	2,5	white	3pole
UVABU-W-2.5-600	6000	2,5	white	3pole
UVABU-W-2.5-800	8000	2,5	white	3pole



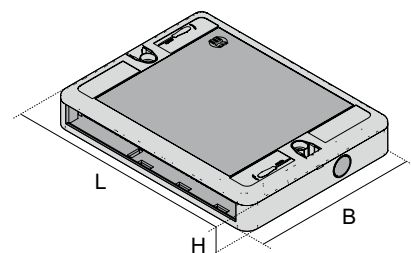
UV distributor box

WAGO WINSTA MIDI system
For assembly instructions, see the chapter assembly.

article number	H mm	B mm	L mm	colour	input	output	G kg
PA							
UV-S 6K	30	145	190	black	2x5pole	6x3pole	0,40
UV-W 6K	30	145	190	white	2x5pole	6x3pole	0,40
UV-S0 6K	30	145	190	black	1 x clamp	6x3pole	0,40
UV-W0 6K	30	145	190	white	1 x clamp	6x3pole	0,40

accessories optional:

- UVABU** connecting line plug - socket, WAGO
- UVBU-5** socket component, WAGO
- UVB-2** distributor block, 2x3 pole
- UVBU-3** socket component, WAGO



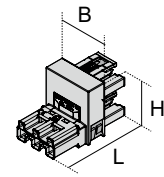
Device installation cups and installation devices

Connector system WAGO

UVB-2 distributor block, 2x3 pole

WAGO WINSTA MIDI system

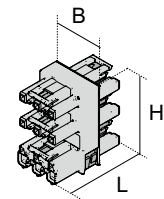
article number	H mm	B mm	L mm	colour	input	output	G kg
PA							
UVB-S 2K	33	30	51	black	1x3pole	2x3pole	0,02
UVB-W 2K	33	30	51	white	1x3pole	2x3pole	0,02



UVB-5 distributor block, 5x3 pole

WAGO WINSTA MIDI system

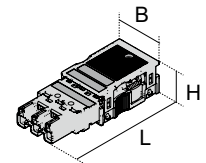
article number	H mm	B mm	L mm	colour	input	output	G kg
PA							
UVB-S 5K	48	30	46	black	1x3pole	5x3pole	0,05
UVB-W 5K	48	30	46	white	1x3pole	5x3pole	0,05



UVST-3 plug component, WAGO

WAGO WINSTA MIDI system

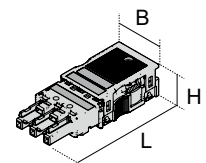
article number	H mm	B mm	L mm	AQ mm ²	colour	output	G kg
PA							
UVST-S-3PK	15	35	76	4,0	black	3pole	0,02
UVST-W-3PK	15	35	76	4,0	white	3pole	0,02



UVBU-3 socket component, WAGO

WAGO WINSTA MIDI system

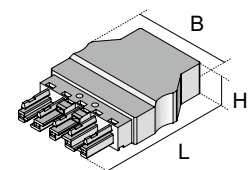
article number	H mm	B mm	L mm	AQ mm ²	colour	output	G kg
PA							
UVBU-S-3PK	15	35	76	4,0	black	3pole	0,02
UVBU-W-3PK	15	35	76	4,0	white	3pole	0,02



UVBU-5 socket component, WAGO

WAGO WINSTA MIDI system

article number	H mm	B mm	L mm	AQ mm ²	colour	output	G kg
PA							
UVBU-S-5PK	17	55	76	4,0	black	5-pole	0,02
UVBU-W-5PK	17	55	76	4,0	white	5-pole	0,02

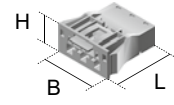


Device installation cups and installation devices

Connector system WAGO

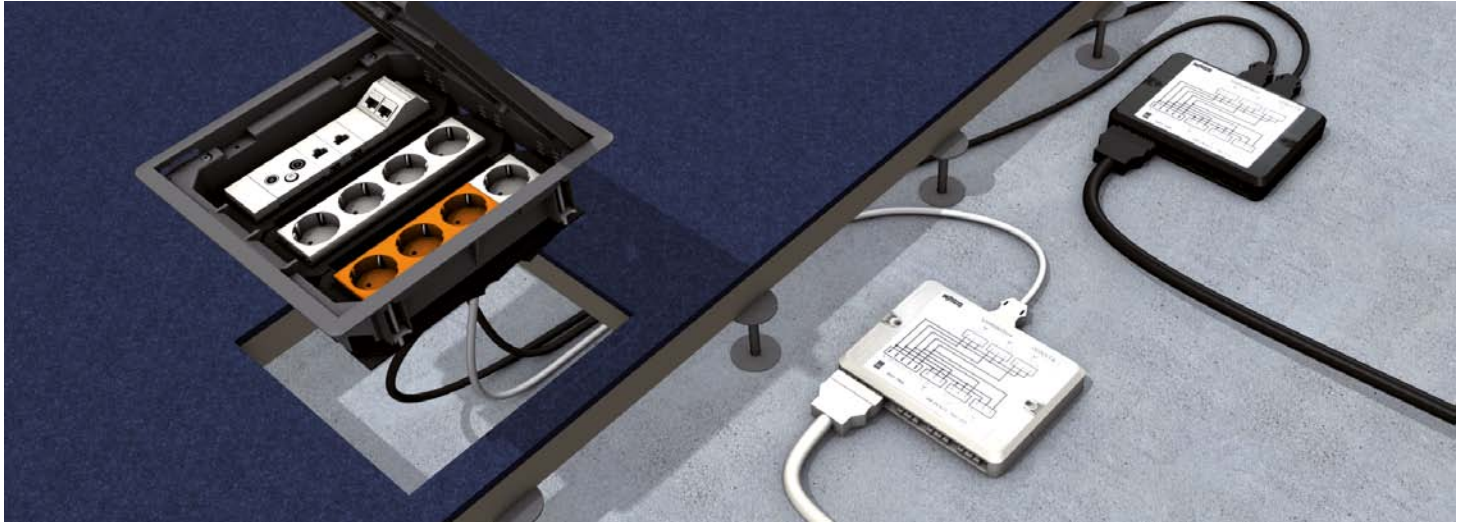
UVS ST snap-in-piece, plug, Wago

article number	H mm	B mm	L mm	AQ mm ²	colour	input	output	G kg
PA								
UVS-ST-S1K	17	35	37	4,0	black	1 x clamp	1x3pole plug	0,01
UVS-ST-W1K	17	35	37	4,0	white	1 x clamp	1x3pole plug	0,01



Connector system WAGO | Device cup, pre-converted

Assembly instruction



Pre-converted device cup, complete with snap-in plug component and pre-wired sockets. Including all covers and mounting material. For latching into a round or quadrangular installation unit. For up to four heavy current engineering installation devices. For the installation of 3-pole connecting lines with plug connector and socket component.



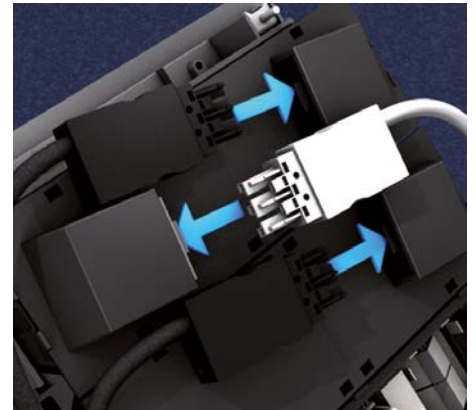
1 | Pre-converted device cups

Delivery of device cups: fully pre-mounted with sockets and pre-wired on connector plugs.



2 | Device mounting cup

Place the pre-converted device cup into the lock-in leads of the installation units as deep as possible.



3 | Connecting lines

Select cables according to colour (black: general net, white: data processing net) and length. Insert the socket component of the 3-pole connecting line onto the snap-in piece in the device cup.



4 | Installation unit

Place the complete installation unit with the device cups from the top into the existing floor opening and fixate in the floor with claws.



5 | Plug connector

Self-locking and coded plug connectors facilitate faultless mounting with the device cup. To release, unlatch the grey spring catch with a turn screw.

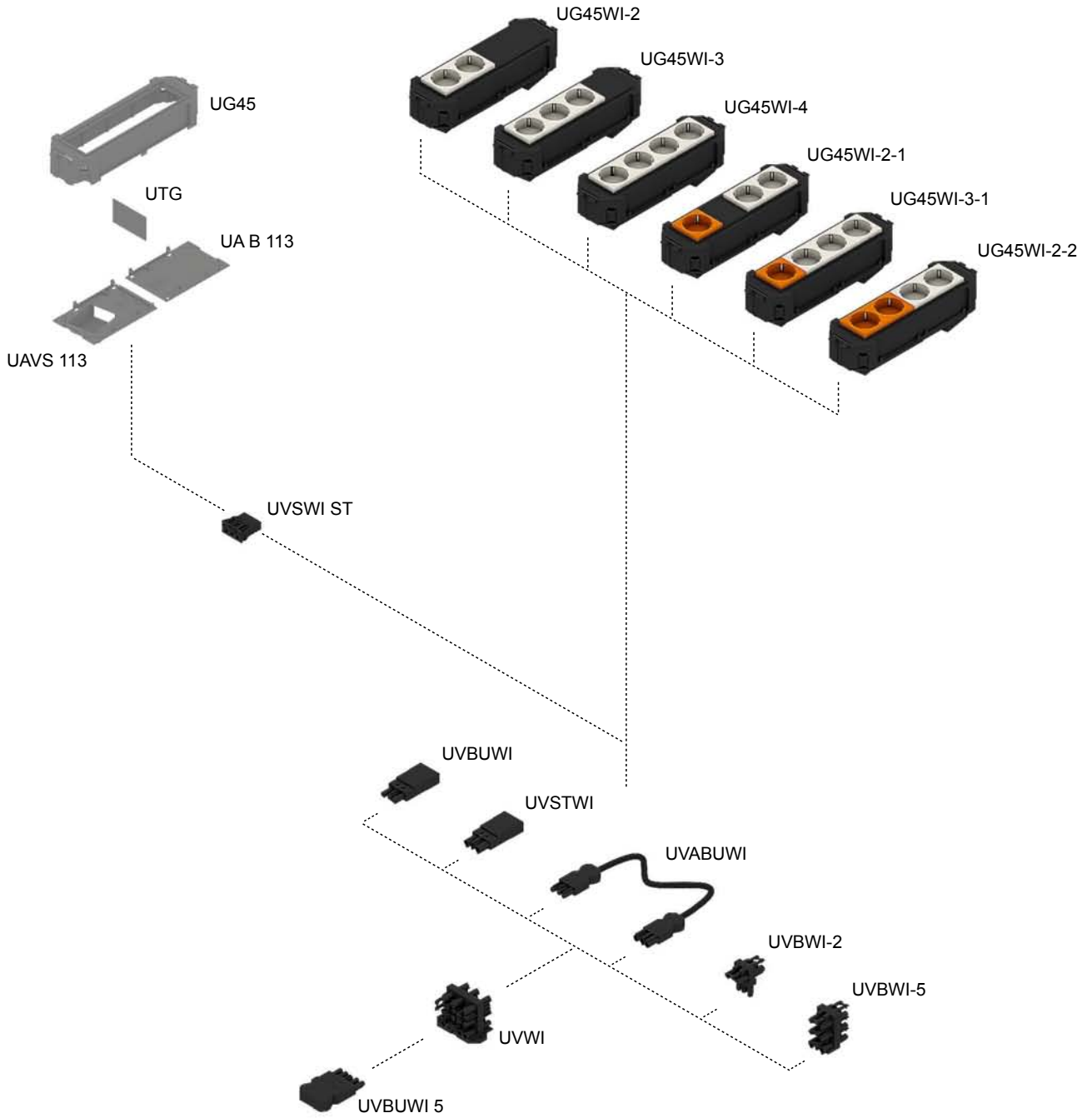


6 | Underfloor distributor

Insert the plug of the 3-pole connecting line in one of the six output sockets of the distributor and complete with 5-pole input.

System overview

Device installation cups and installation devices Wieland



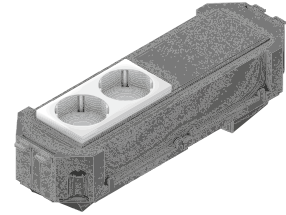
Device installation cups and installation devices

Connector system Wieland

UG45WI-2 device mounting cup, Wieland

Only suitable for raised and hollow floors. Other pre-converted device cups are available upon request. For assembly instructions, see the chapter assembly.

article number	colour Snap-in	configuration grounding receptacle 16A
ABS		
UG45WI-CW2	black	double, cream white
UG45WI-G2	white	double green
UG45WI-O2	white	double, orange



UG45WI-3 device mounting cup, Wieland

Only suitable for raised and hollow floors. Other pre-converted device cups are available upon request. For assembly instructions, see the chapter assembly.

article number	colour Snap-in	configuration grounding receptacle 16A
ABS		
UG45WI-CW3	black	triple, cream white
UG45WI-G3	white	Three-fold green
UG45WI-O3	white	triple, orange



UG45WI-4 device mounting cup, Wieland

Only suitable for raised and hollow floors. Other pre-converted device cups are available upon request. For assembly instructions, see the chapter assembly.

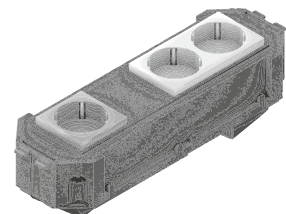
article number	colour Snap-in	configuration grounding receptacle 16A
ABS		
UG45WI-CW4	black	quadruple, cream white
UG45WI-O4	white	quadruple, orange



UG45WI-2-1 device mounting cup, Wieland

Only suitable for raised and hollow floors. Other pre-converted device cups are available upon request. For assembly instructions, see the chapter assembly.

article number	colour Snap-in	configuration grounding receptacle 16A
ABS		
UG45WI-CW2O1	back/white	double cream white + single orange
UG45WI-O2CW1	white/black	double orange + single cream white



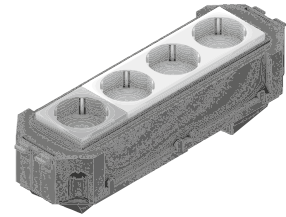
Device installation cups and installation devices

Connector system Wieland

UG45WI-3-1 device mounting cup, Wieland

Only suitable for raised and hollow floors. Other pre-converted device cups are available upon request. For assembly instructions, see the chapter assembly.

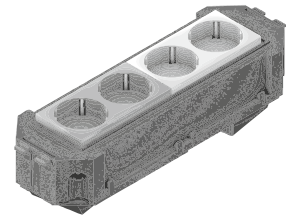
article number	colour Snap-in	configuration grounding receptacle 16A
ABS		
UG45WI-CW301	back/white	triple cream white + single orange
UG45WI-O3CW1	white/black	triple orange + single cream white



UG45WI-2-2 device mounting cup, Wieland

Only suitable for raised and hollow floors. Other pre-converted device cups are available upon request. For assembly instructions, see the chapter assembly.

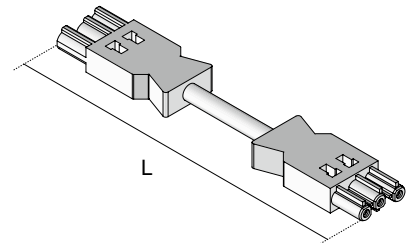
article number	colour Snap-in	configuration grounding receptacle 16A
ABS		
UG45WI-CW202	back/white	double cream white + double orange
UG45WI-CW2G2	back/white	double creme white + double green



UVABUWI connecting line plug - socket, Wieland

For assembly instructions, see the chapter assembly.

article number	L mm	KQ mm ²	colour	input/output
PA PVC				
UVABUWI-S-2.5-100	1000	2,5	black	3pole
UVABUWI-S-2.5-400	4000	2,5	black	3pole
UVABUWI-S-2.5-600	6000	2,5	black	3pole
UVABUWI-S-2.5-800	8000	2,5	black	3pole
UVABUWI-W-2.5-100	1000	2,5	white	3pole
UVABUWI-W-2.5-400	4000	2,5	white	3pole
UVABUWI-W-2.5-600	6000	2,5	white	3pole
UVABUWI-W-2.5-800	8000	2,5	white	3pole



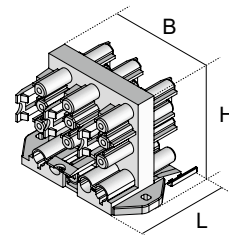
Device installation cups and installation devices

Connector system Wieland

UVWI distributor block

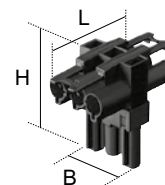
For assembly instructions, see the chapter assembly.

article number	H mm	B mm	L mm	colour	input	output	G kg
PA							
UVWI-S 6	57	50	59	black	1x5pole	6x3pole	0,02
UVWI-W 6	57	50	59	white	1x5pole	6x3pole	0,02



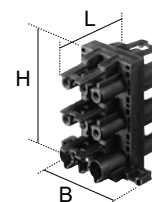
UVBWI-2 distributor block

article number	H mm	B mm	L mm	colour	input	output	G kg
PA							
UVBWI-S 2	43	28	59	black	1x3pole	2x3pole	0,02
UVBWI-W 2	43	28	59	white	1x3pole	2x3pole	0,02



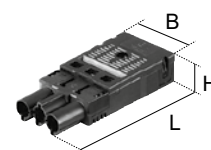
UVBWI-5 distributor block

article number	H mm	B mm	L mm	colour	input	output	G kg
PA							
UVBWI-S 5	53	52	59	black	1x3pole	5x3pole	0,02
UVBWI-W 5	53	52	59	white	1x3pole	5x3pole	0,02



UVSTWI-3 Plug part, Wieland

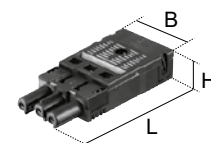
article number	H mm	B mm	L mm	AQ mm ²	colour	output	G kg
PA							
UVSTWI-S-3P	16	33	75	2,5	black	3pole	0,02
UVSTWI-W-3P	16	33	75	2,5	white	3pole	0,02



UVBUWI-3 socket part, Wieland

Wieland gesis GST 18/3

article number	H mm	B mm	L mm	AQ mm ²	colour	output	G kg
PA							
UVBUWI-S-3P	16	33	75	2,5	black	3pole	0,02
UVBUWI-W-3P	16	33	75	2,5	white	3pole	0,02



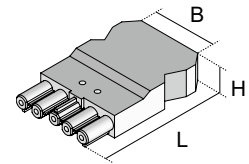
Device installation cups and installation devices

Connector system Wieland

UVBUWI-5 socket part, Wieland

Wieland gesis GST 18i3

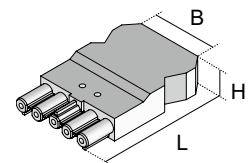
article number	H mm	B mm	L mm	AQ mm ²	colour	output	G kg
PA							
UVBUWI-S-5P	17	48	77	2,5	black	5-pole	0,02
UVBUWI-W-5P	17	48	77	2,5	white	5-pole	0,02



UVBUWI-4.0-5 socket part, Wieland

Wieland gesis GST 18i3

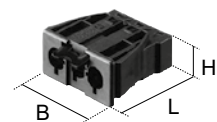
article number	H mm	B mm	L mm	AQ mm ²	colour	output	G kg
PA							
UVBUWI-S-4.0-5P	17	48	85	4,0	black	5-pole	0,02
UVBUWI-W-4.0-5P	17	48	85	4,0	white	5-pole	0,02



UVSWI ST Snap-in-piece, plug, Wieland

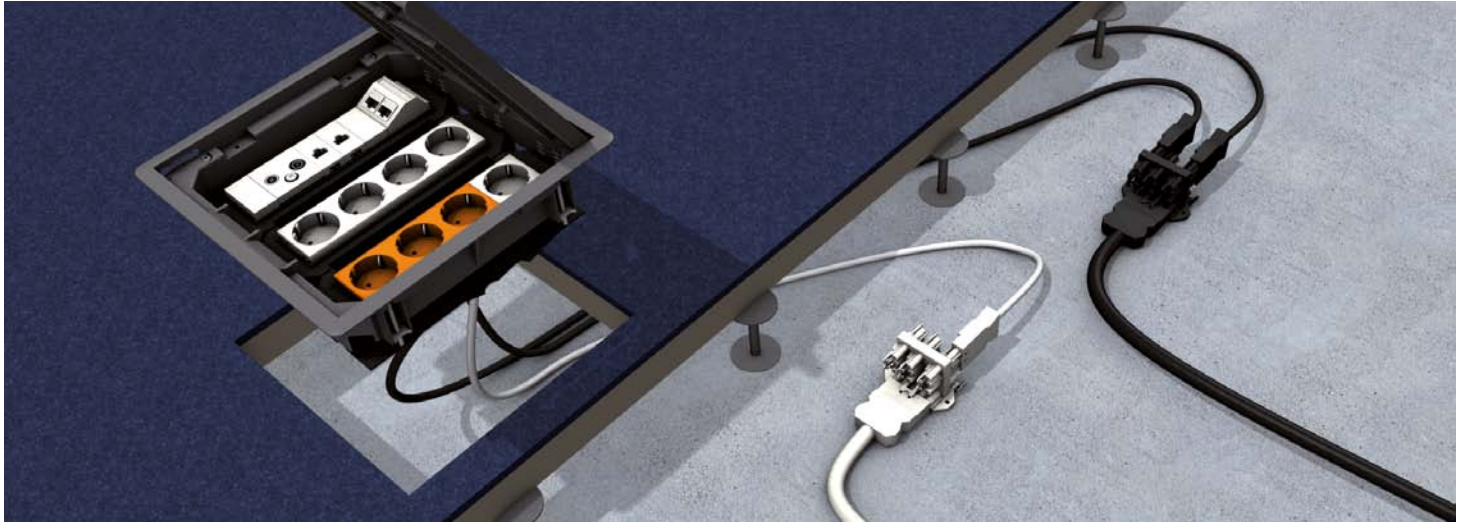
WIELAND GST18 system

article number	H mm	B mm	L mm	AQ mm ²	colour	input	output	G kg
PA								
UVSWI-ST-W1	17	35	37	2,5	white	1 x clamp	1x3pole plug	0,02
UVSWI-ST-S1	17	35	37	2,5	black	1 x clamp	1x3pole plug	0,02



Connector system Wieland | Device cup, pre-converted

Assembly instructions



Pre-converted device cup, complete with snap-in plug component and pre-wired sockets. Including all covers and mounting material. For latching into a round or quadrangular installation unit. For up to four heavy current engineering installation devices. For the installation of 3-pole connecting lines with plug connector and socket component.



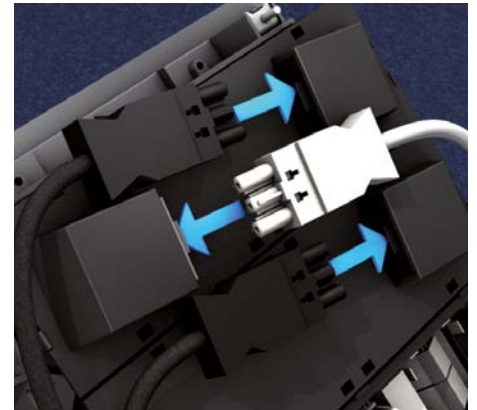
1 | Pre-converted device cups

Delivery of device cups: fully pre-mounted with sockets and pre-wired on connector plugs.



2 | Device mounting cup

Place the pre-converted device cup into the lock-in leads of the installation units as deep as possible.



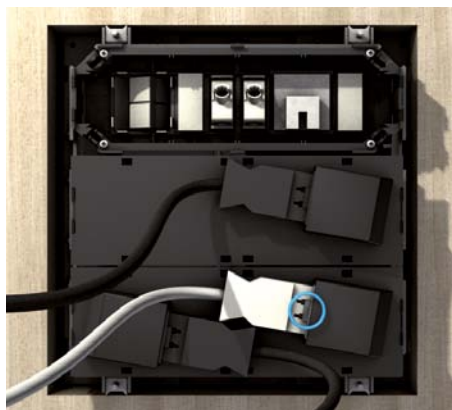
3 | Connecting lines

Select cables according to colour (black: general net, white: data processing net) and length. Insert the socket component of the 3-pole connecting line onto the snap-in piece in the device cup.



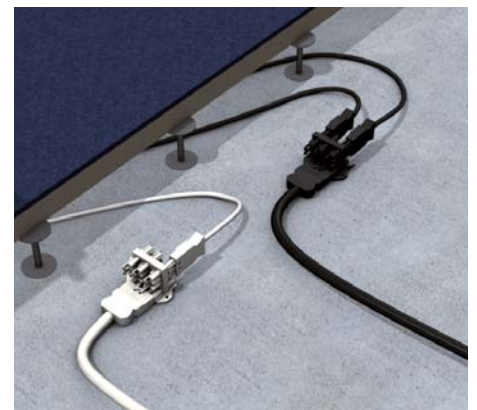
4 | Installation unit

Place the complete installation unit with the device cups from the top into the existing floor opening and fixate in the floor with claws.



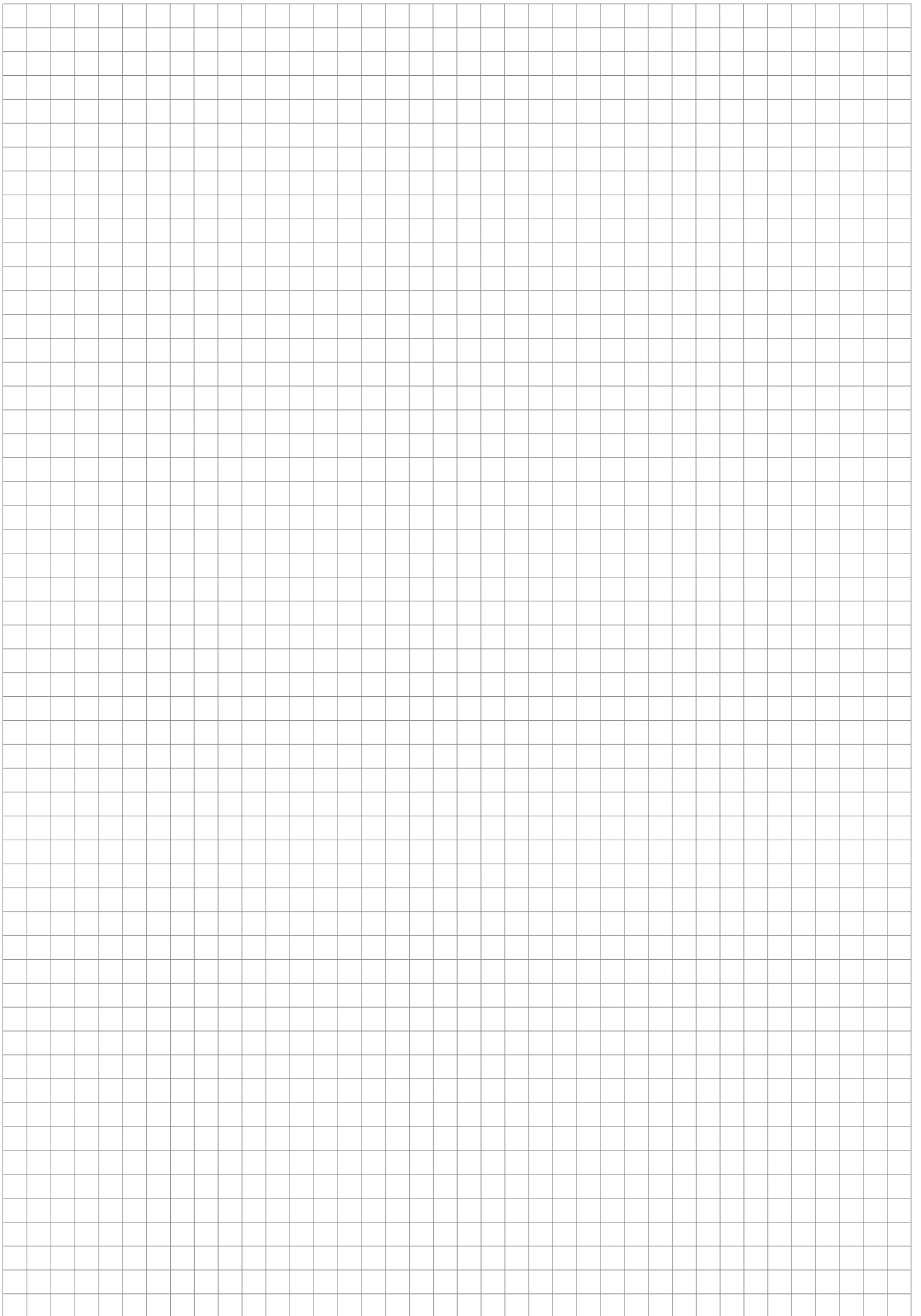
5 | Plug connector

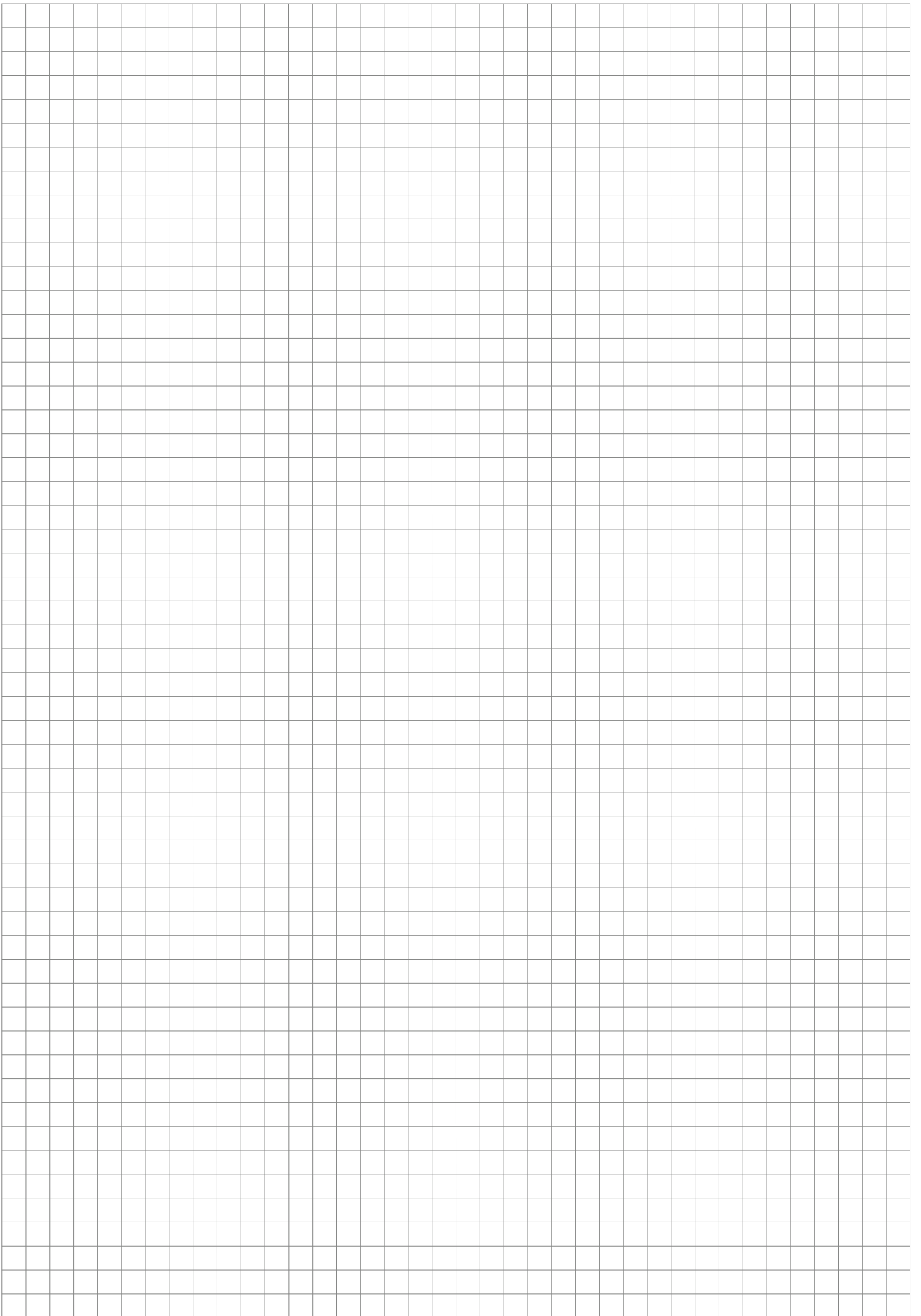
Self-locking and coded plug connectors facilitate faultless mounting with the device cup. To release, unlatch the spring catch with a turn screw.



6 | Underfloor distributor

Insert the plug of the 3-pole connecting line in one of the six output sockets of the distributor and complete with 5-pole input.







Errors and technical modification subject to change. Reproduction as well as electronic duplication only with our written permission. With appearance of this print all preceding documents lose their validity.

