



# Compact single outlet, quadrangular British Standard

## Assembly instruction

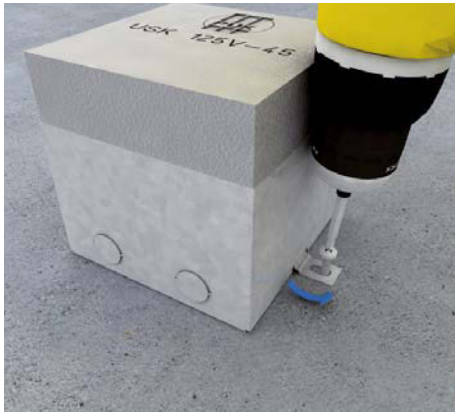


# Compact single outlet, quadrangular | British Standard

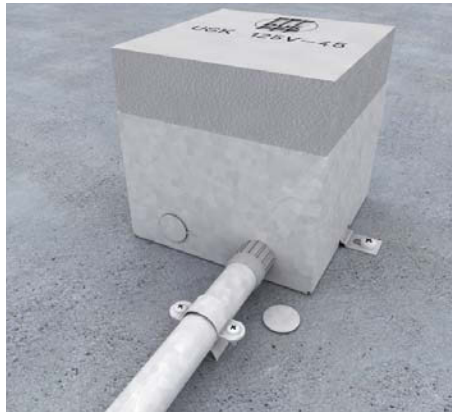
## Assembly instruction



The quadrangular compact single outlet, external dimensions 125 x 125 mm and 160 x 160 mm for installation directly into screed, suitable for dry and wet maintenance rooms. Scope of delivery contains floor box, stainless steel unit and shuttering unit. For parquet and stone floors of 12/22 mm, levelling range: 80–125 mm, resp. 90–135 mm.



**1 | Floor box**  
Align floor box in dead centre as delivered. Bend open ears and fix to raw ceiling.



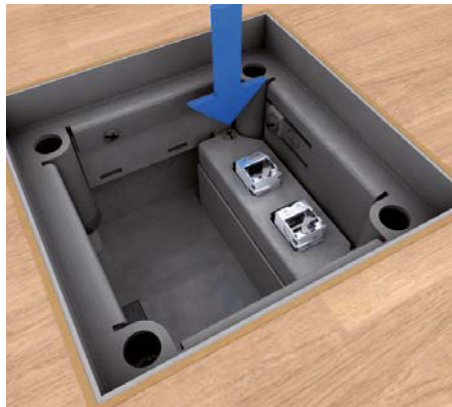
**2 | Steel armored conduit**  
Bend open perforation in the sides of floor box and insert steel armored conduit.



**3 | Casting screed**  
Seal all openings of the floor box as delivered and cast screed accurately to the shuttering unit. Remove shuttering unit when screed is hardened.



**4 | Levelling to floor**  
Remove cartridge cover and rubber seal and adjust single outlet to floor height flush over the four levelling screws.



**5 | Data systems**  
Insert connected data jacks from below into the plate. Fasten equipped plate at the side of the single outlet.



**6 | Heavy current systems**  
Insert heavy current devices from the top and connect from below. Insert equipped plate using the snap tabs into the frame and fasten the opposite side.

# Compact single outlet, quadrangular | British Standard

## Assembly instruction



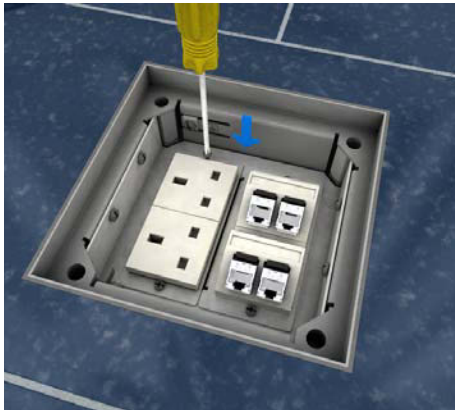
**7 | Assembly**  
Insert heavy current and low current plugs.



**8 | Single outlet**  
Insert rubber seal and cartridge cover, in case of dry maintenance floors install cartridge unit with cable outlet. The unit must be integrated in the potential equalization of the system.



**9 | Installation devices**  
Latch sockets and data devices into plate and connect conducts.



**10 | Single outlet frame**  
Fasten equipped plates to single outlet frame.



**11 | Assembly**  
Insert heavy current and low current plugs.



**12 | Tube**  
Insert rubber seal and tube cover. In case of wet maintenance floors, mount single tube outlet and tube. The unit must be integrated in the potential equalization of the system.



Errors and technical modification subject to change, reproduction as well as electronic duplication only with our written permission. With appearance of this print all preceding documents lose their validity.

