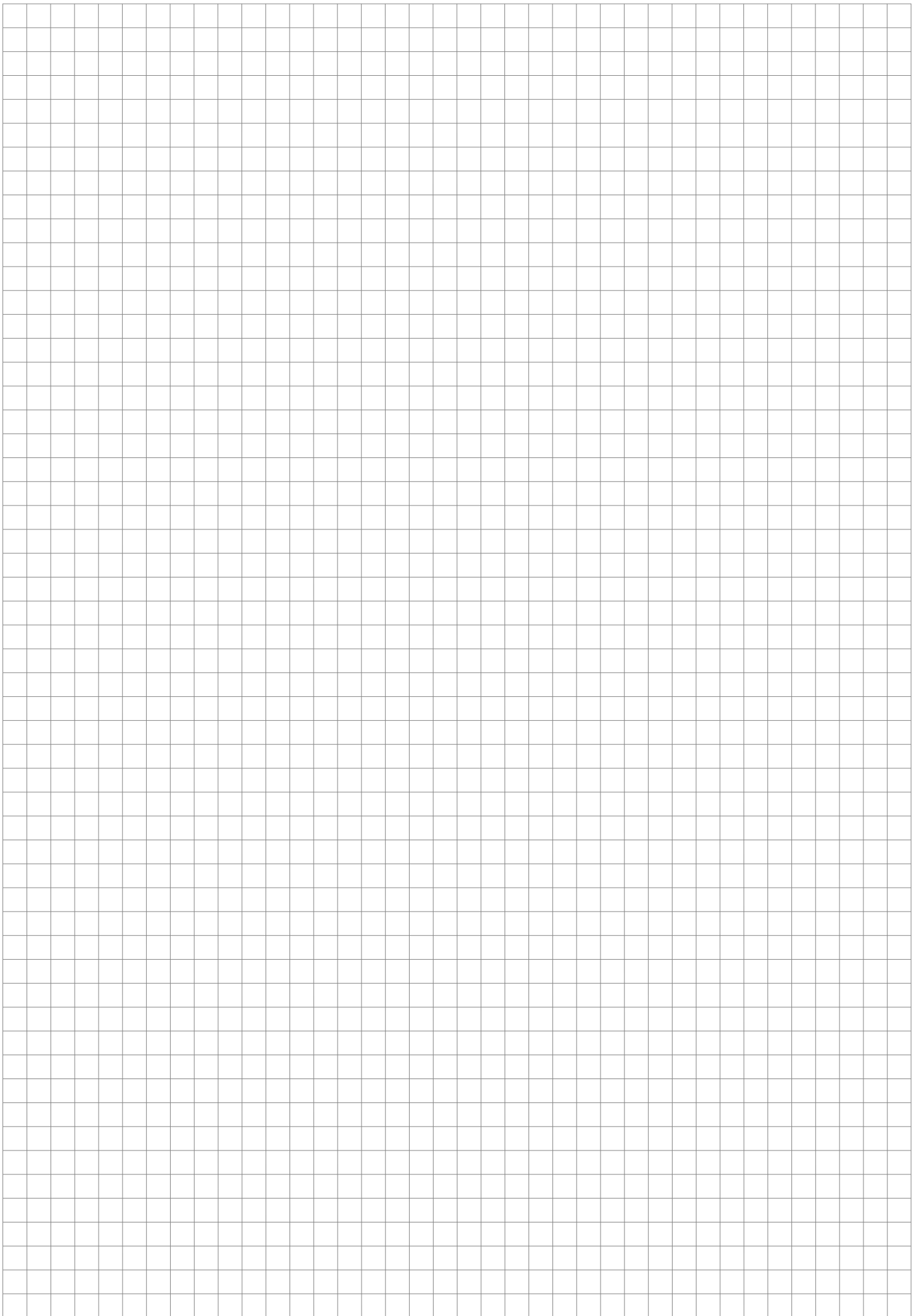




# Device carrier CEE socket

## Assembly instruction



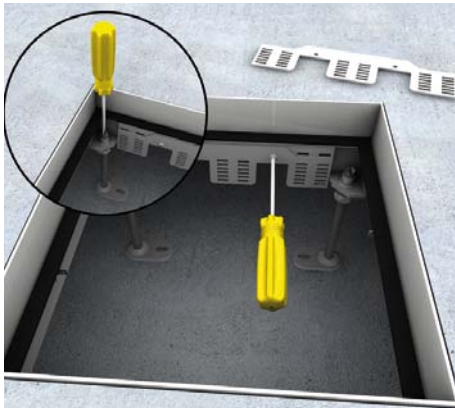


# Device carrier CEE socket

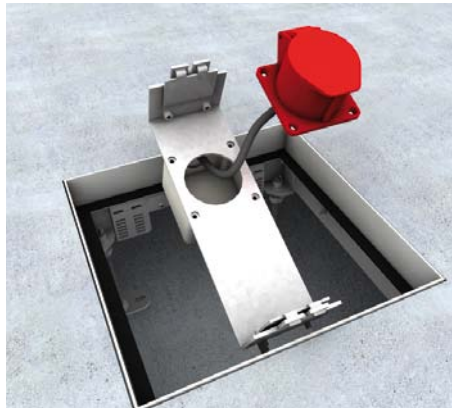
## Assembly instruction



Carrier made of sheet steel with CEE socket 16A or 32A and box for centre installation into a round or quadrangular installation unit. Necessary installation height must be complied with before assembly.



**1 | Levelling unit**  
Position installation frame on finished floor level height flush with levelling legs. Screw the locking ladder set sideways to the frame. Locking ladder set available at 50 or 80 mm height.



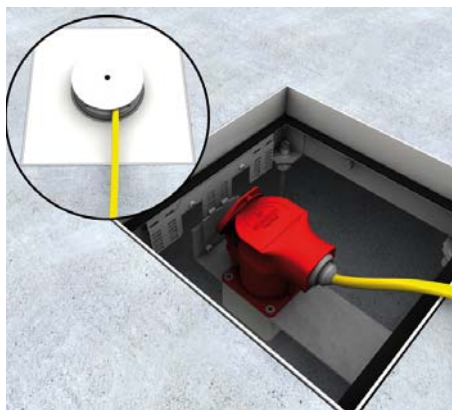
**2 | CEE-Connection socket**  
Detach CEE socket from box and device carrier by unscrewing four screws. Insert rubber seal. Insert connecting cable into container and clamp to CEE box. Reassemble device carrier completely.



**3 | Device carrier**  
Release socket screws on device carrier and lock-in lead. Insert the assembled device carrier into the lock-in leads from the bottom. Open hexagon socket bead and insert sideways.



**4 | Lock-in lead**  
Device carrier with CEE socket and box in lock-in lead suitable for floor constructions from 160 mm. Always use the lowest locking position. Clamp device carrier firmly with a socket head wrench.



**5 | Angle Plug**  
For floor constructions of at least 185 mm. Insert angle plug from and cartridge cover. Comply with bending radius to avoid pinched cables.



**6 | Straight connector**  
When using a straight connector, note that the cover cannot be closed while in use. Protect installation unit – accident risk!



Errors and technical modification subject to change, reproduction as well as electronic duplication only with our written permission. With appearance of this print all preceding documents lose their validity.

