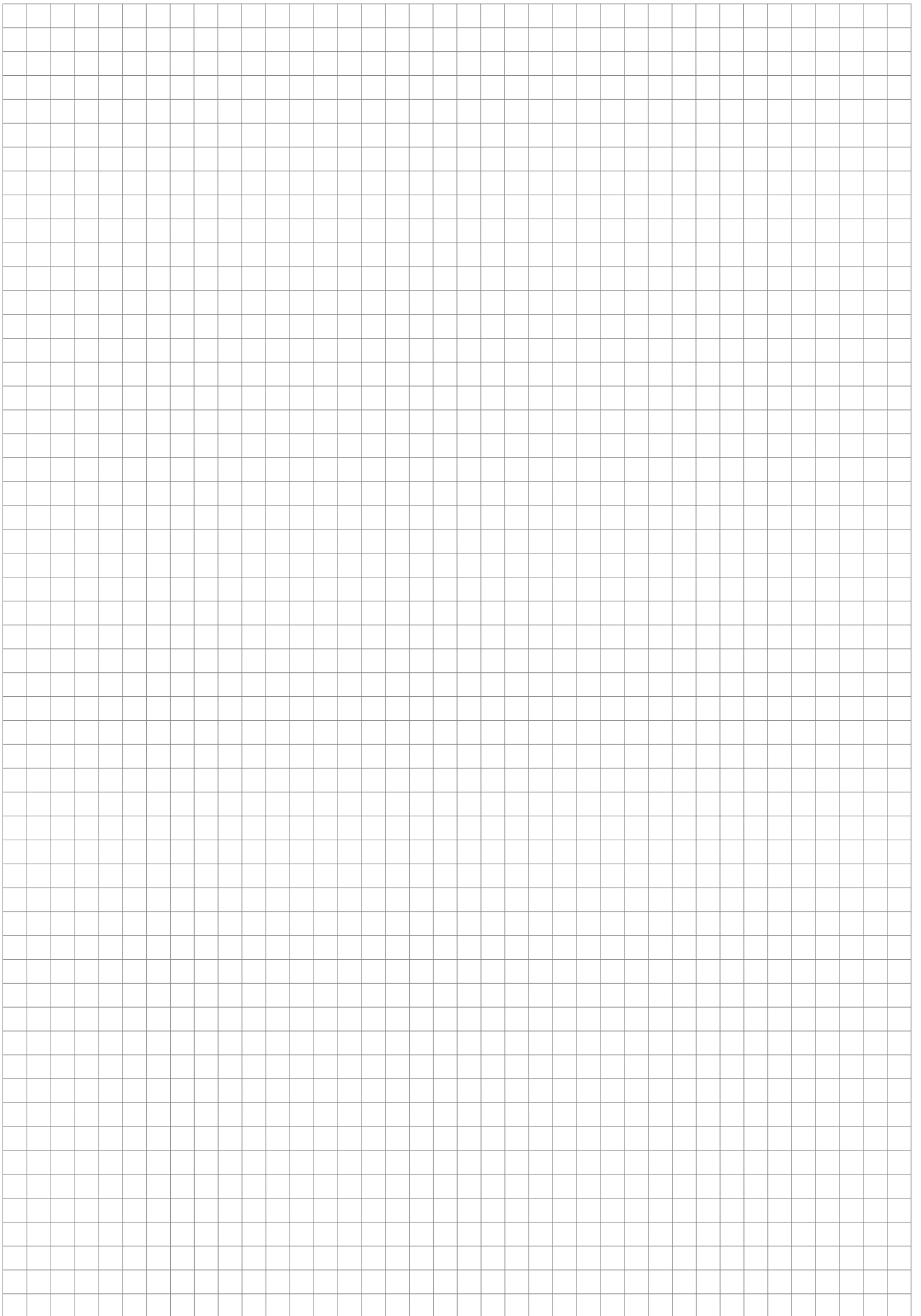




Shuttering unit, quadrangular

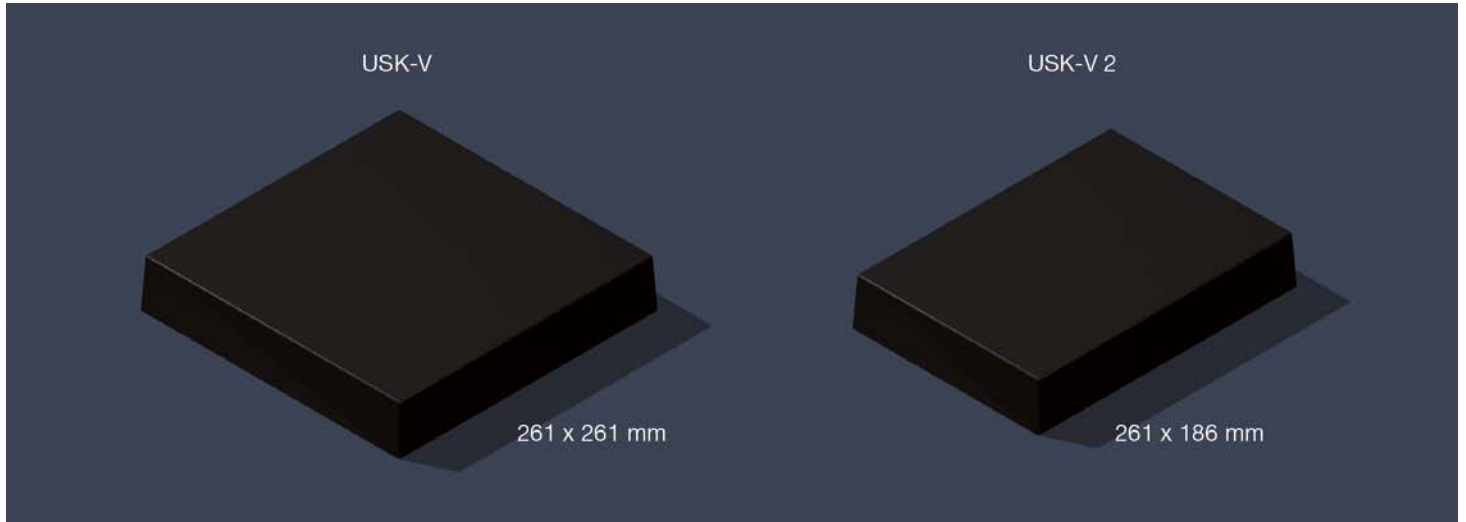
Assembly instruction





Shuttering unit, quadrangular

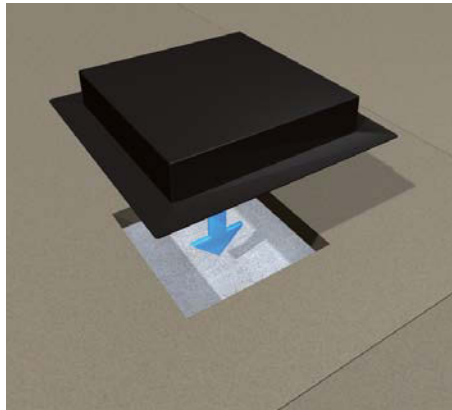
Assembly instruction



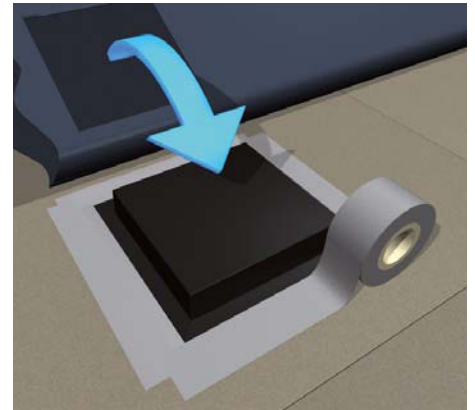
Quadrangular shuttering units in two designs, deep-drawing piece made of 1 mm plastic, height 50 mm for providing an opening in the hollow floor.



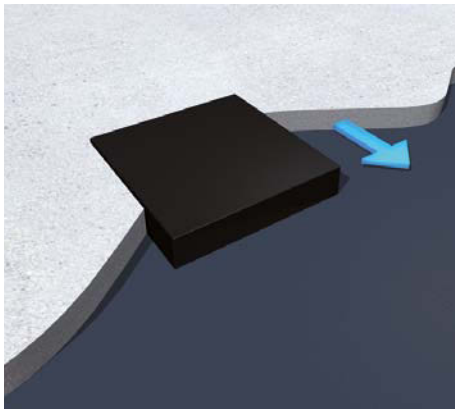
1 | Levelling of shuttering unit
Provide openings 261 x 261 mm or 261 x 186 mm in the assembled basic floor.



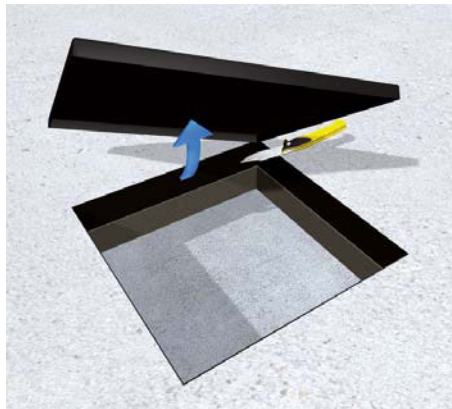
2 | Fixation of shuttering unit
Level the shuttering units on the hollow floor before applying the screed.



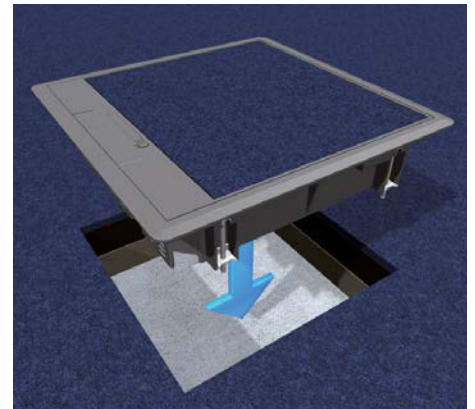
3 | Mounting of foil
Fix shuttering units to the floor with adhesive tape, cut out foil and overlap.



4 | Inserting screed
Spread the screed on the whole area and compact it neatly.



5 | Cut out opening
After the screed has hardened remove the overlapping lid and sidewalls neatly. Side walls must be maintained.



6 | Mounting assembly unit
After the floor covering has been laid insert the installation unit straight into the opening and fasten it with the claws evenly to the screed.



Errors and technical modification subject to change, reproduction as well as electronic duplication only with our written permission. With appearance of this print all preceding documents lose their validity

