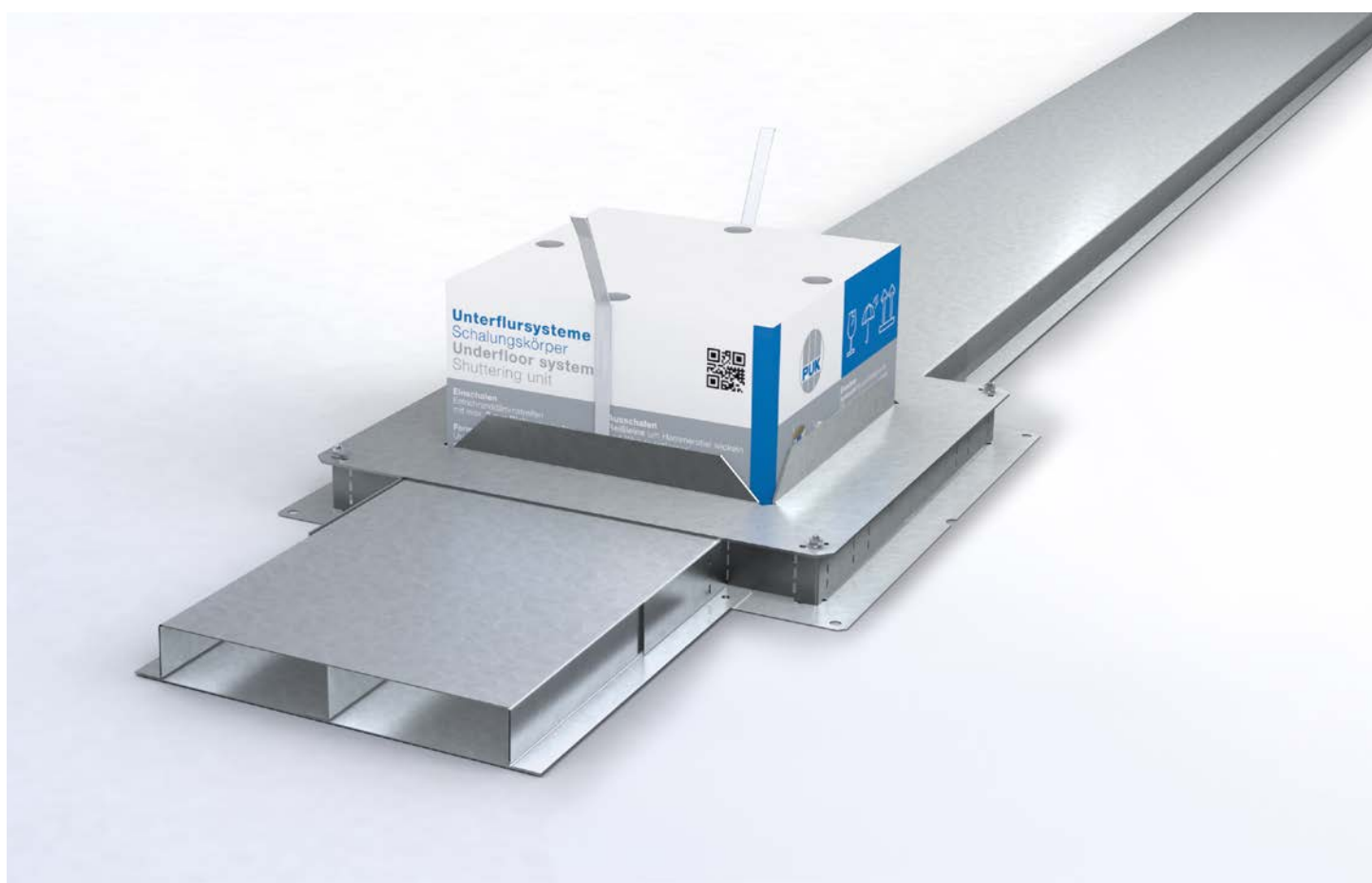
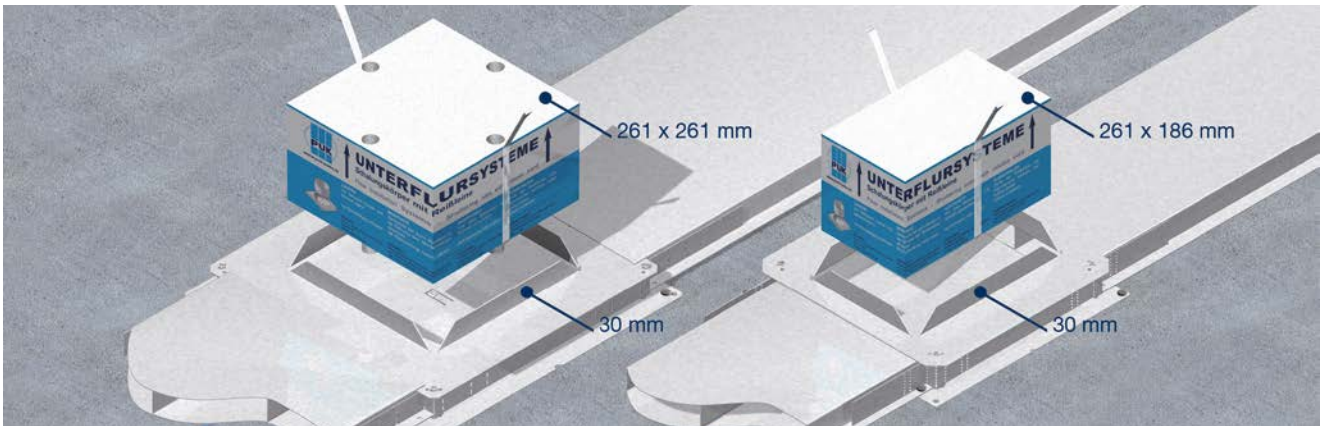


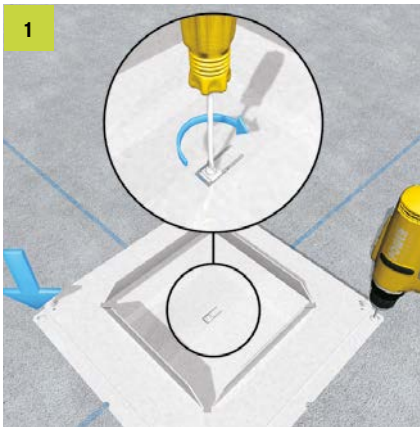
Hollow space floor box, quadrangular

Assembly instruction



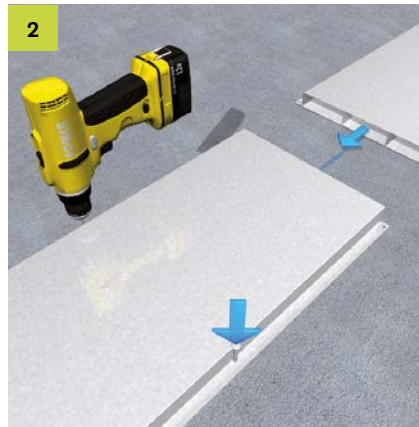


Hollow space floor box for quadrangular installation units 258 x 258 mm or 258 x 184 mm and underfloor ducts of up to 250 or 350 mm width with the heights 28/38/48 mm. Comply with minimum screed covering of 35 mm.



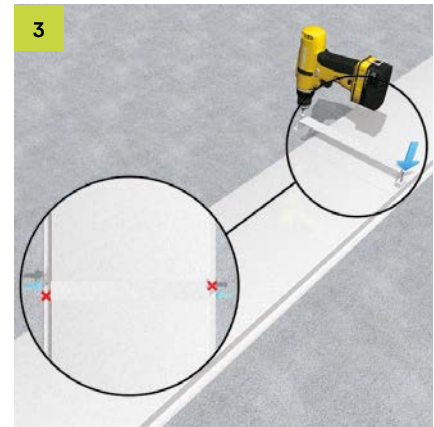
Hollow space floor box

Align floor box dead centre to the duct course. Fasten on the raw ceiling and screw the earthing lug tight. Bend open side walls at the perforation. Set one floor box per change of direction into the duct system.



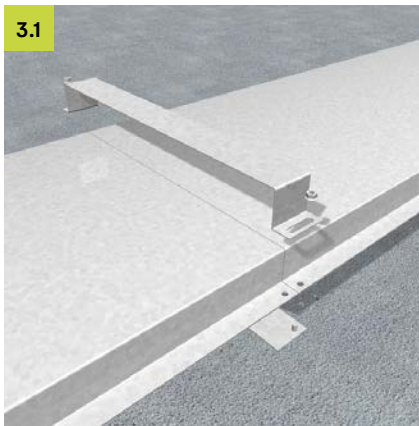
Duct

Cut duct, lay up and align. Burr and galvanize cutting edges. Fasten with two nail plugs through the holes in the duct's side notch. Push duct to dead stop into the box.



Dowel Clip

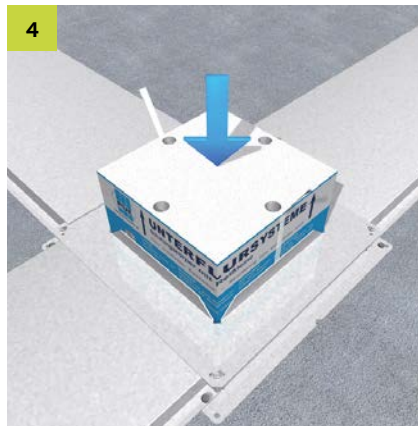
Align duct segments flush and push together. Use one clip per duct joint. Fasten overlapping with two nail plugs. Factor in potential equalisation when inserting plugs.



3.1

Glue Clip

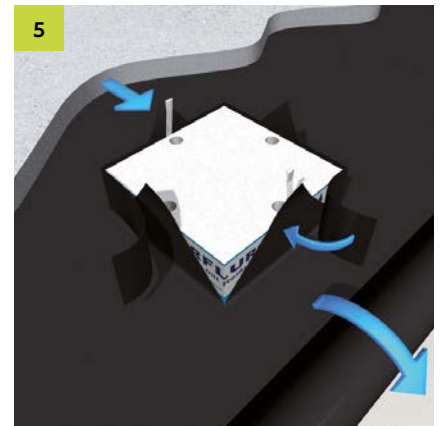
If the duct system cannot be fixed with dowels, for example when laying on bitumen sheeting, we recommend the use of the UBM jointing bracket sleeve. The potential equalisation must be observed.



4

Inserting the shuttering unit

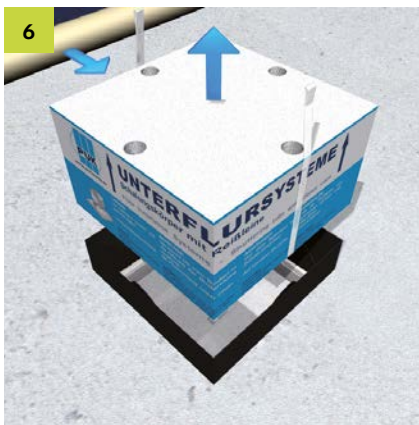
Insert shuttering unit straight from the top into the floor box opening. Floor box and shuttering unit make one mounting unit. Mask all openings in the duct system. Apply insulation flush to duct system and to shuttering unit.



5

Screed work / Subsonic noise insulation

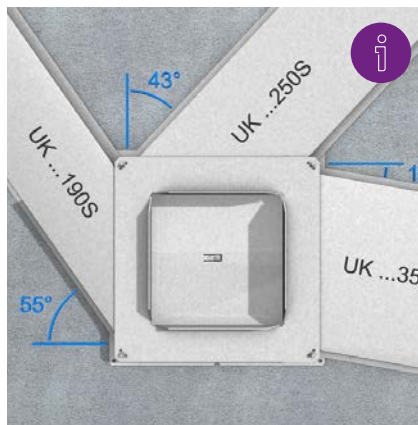
The shuttering unit must be sprayed with formwork oil. The underfloor system must be insulated against subsonic noise. Mask the shuttering unit with foil. Foil thickness must be < 2 mm. Apply screed neatly to the shuttering unit.



6

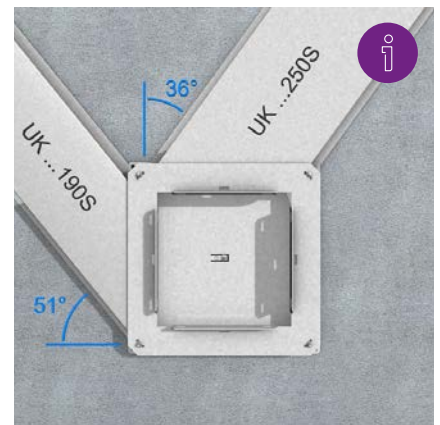
Removal of shuttering unit

Remove shuttering unit with the release cord from the hardened screed. Process floor cover to the cleaned installation opening (261 x 261 mm, 261 x 186 mm).



Using the hollow space floor box UBDHB350

When using the hollow space floor box UBDHB350, the screed-covered duct maximal can be inserted with a maximum angle of 55° without affecting the function. Cutting positions must be deburred and galvanised with cold zinc.



Using the hollow space floor box UBDHB250

When using the hollow space floor box UBDHB250, the screed-covered duct maximal can be inserted with a maximum angle of 51° without affecting the function. Cutting positions must be deburred and galvanised with cold zinc.

Errors and technical modification subject to change, reproduction as well as electronic duplication only with our written permission. With appearance of this print all preceding documents lose their validity.

© PohlCon | PC-LIT-MA-UBDHB-V-EN | 04-2016 | 2.v. | 04-2022

PohlCon GmbH
Nobelstraße 51
12057 Berlin

T +49 30 68 283-04
F +49 30 68 283-383

www.pohlcon.com